



Creating Undertaking & Sharing



PYTES (USA) Energy Inc.
BATTERY EXPERT-GREEN ENERGY PROVIDER

LI-ION BATTERY FOR ENERGY STORAGE



CONTENTS

03	About Us
07	Laboratory Introduction
09	Qualification & Certification
11	Standard Products Introduction
29	Accessories
31	Customer Cases
33	Inverter Compatibility List



Our journey began in 2004, developing solutions for residential energy storage systems. We help people save money and feel confident facing outage, with our ongoing support and technology accumulated over the 19 years.

Driven by the desire to better serve our customers, we run 3 logistics and service centers apart from 4 self-owned production bases, specifically in Los Angeles CA, Dallas TX and Panama to cover more areas with quicker delivery and faster response to customer calls.

Creating, Undertaking, Sharing, we practice our philosophy and fulfill the mission that to deliver safe, reliable and affordable clean energy to home and community for a more carbon-free future.



\$125M

Total Asset

19 Years

Industry experience



1000+

Employee

3.95Gwh

Annual capacity



Global Marketing & Service

North America

PYTES USA office & Warehouse
(Los Angeles)



Europe

PYTES EU office
(The Netherlands)

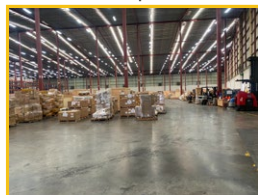
Factory in
Hungary

PYTES office
in France

PYTES office
in Germany



PYTES USA Warehouse
(Dallas)



PYTES Panama Warehouse



Shandong PYTES New
Energy Technology



Shandong PYTES
Electronics



China



Headquarter/
Factory in Shanghai

Vietnam



Factory in Ho Chi Minh City



SGS, TÜV, BV, DEKRA

Accredited Cooperative Testing Labs

Mechanical Tests



Vibration Test



Drop Test



Shocking Test



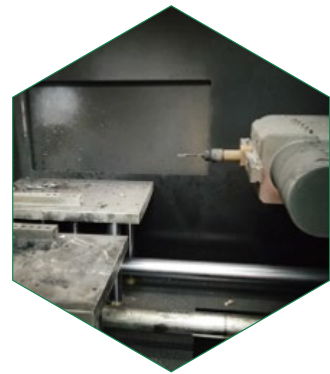
Safety Tests



Short Circuit Test



Impact Test



Needle Test

Environmental Tests



Altitude Simulation



Thermal Shock

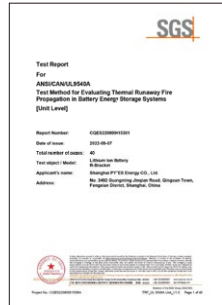
Electrical Tests



Qualification & Certification



UL9540



UL9540A



UL1793



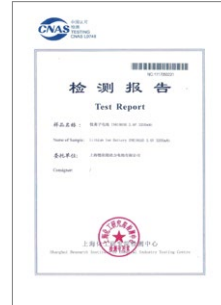
UL1642



IEC62619



CE



UN38.3



RoHS



REACH



KC



ISO9001:2015



ISO14001:2015

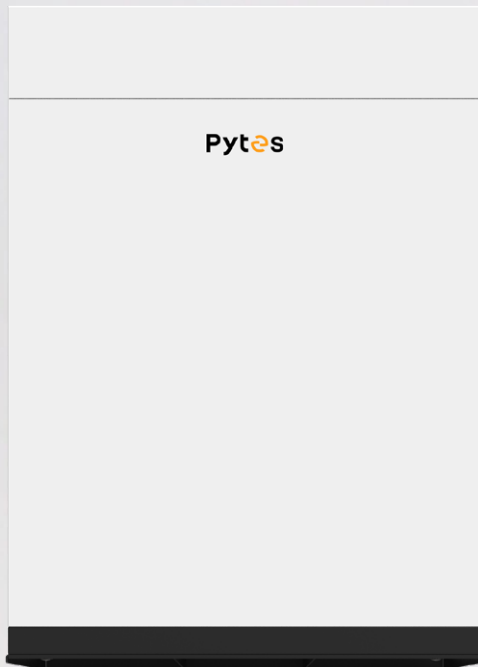


Standard Products

Introduction



E-BOX 48100R



R-BOX



V5°

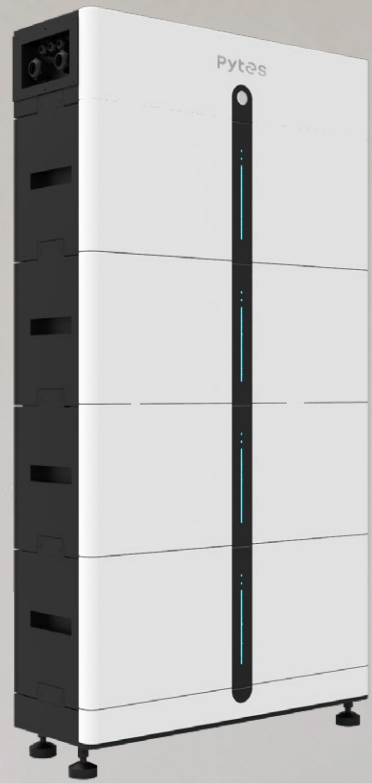


V-BOX-OC



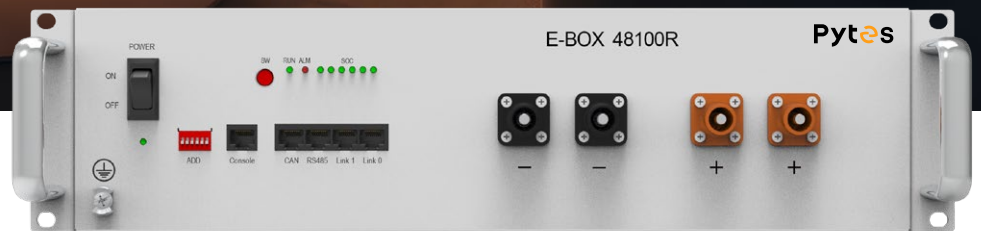


Stack LV Series



HV48100

E-BOX 48100R



Features



Scalable

- From 5.12kWh to 245.76kWh



Compact, Flexible and Easy Install



Long-lasting

- ≥ 6000 Cycles @ 90%DOD



Wide Compatibility



Safe & Reliable

- Tier 1 Automotive Grade A LiFePO4 cells
- Self-designed & Field-proven BMS

10 Years Warranty



E-Box 48100R Specs

Electrical

Nominal Voltage	51.2V
Voltage Range	47.5V~57.6V
Nominal Capacity	100Ah
Nominal Energy	5.12kWh
Recommended Charge/ Discharge Current	50A (2.56kW DC)
Maximum Charge/ Discharge Current	50A (2.56kW DC)
Peak Discharge Current	102A (5.22kW@15s)

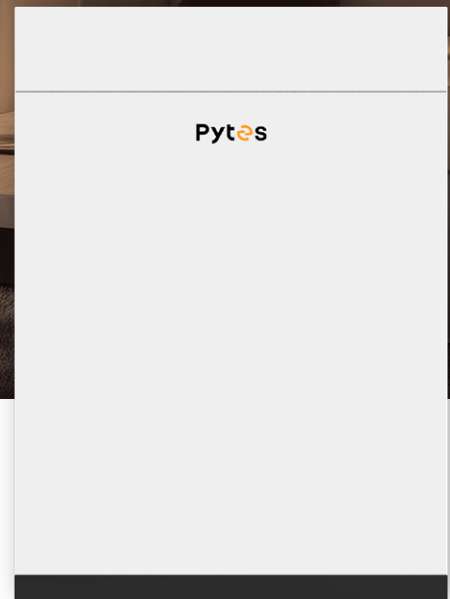
General

Chemistry	LFP
Communication Protocol	CAN/RS485
Dimensions (L*W*H)	17.32 * 24.41 * 4.61 inch (2.6U)
Weight	112.5lbs
Ambient Temperature	14°F~122°F
Round-Trip Efficiency	≥95%
Cycle Life	≥6000cycle
Warranty	10 Years

Certifications

UL9540 Ed.2 (2020), UL9540A, UL1973, CEC, SGIP

R-BOX



R-Box Specs

Mechanical

Load Capacity	2*E-Box 48100R
Dimensions (L*W*H)	11.0*20.1*27.5 inch (30.8 inch H w/holder)
Weight	37.5lbs
Mount	Wall/Floor Mount
Enclosure Rating	IP20
Enclosure Material	Cool-rolled Steel
Cooling	Natural Convection

R-BOX-IP64

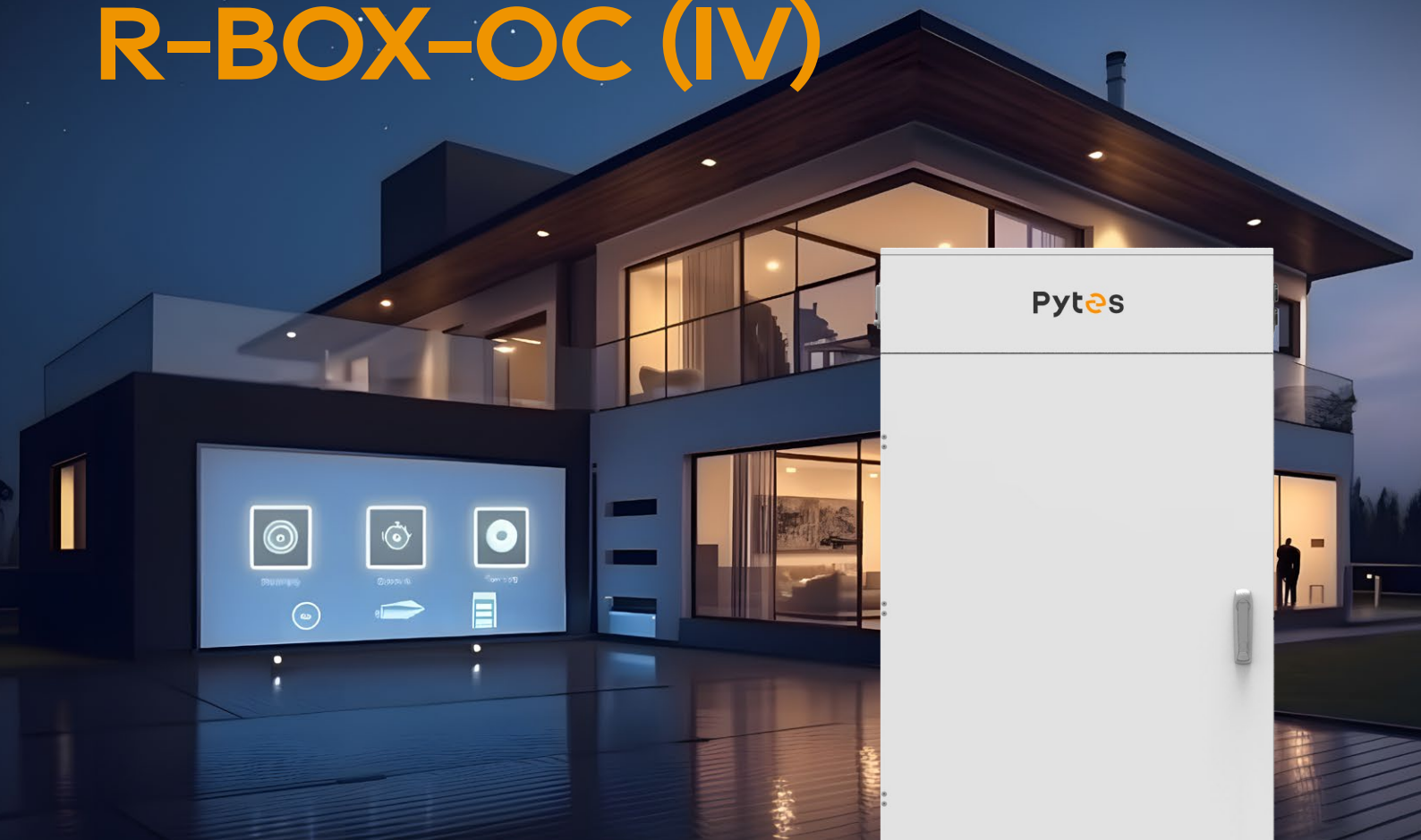


R-Box-IP64 Specs

Mechanical

Load Capacity	2*E-Box 48100R
Dimensions (L*W*H)	12.2*20.9*29 inch (33.7 inch H w/holder)
Weight	51.8lbs
Mount	Wall Mount
Enclosure Rating	IP64
Enclosure Material	Cool-rolled Steel
Cooling	Natural Convection

R-BOX-OC (IV)



R-Box-OC (IV) Specs

Mechanical

Load Capacity	4*E-Box 48100R
Structure	Busbar & DC Circuit Breaker Integrated
Dimensions (L*W*H)	31.5*13.0*62.0 inch
Weight	176.4lbs
Mount	Floor Mount
Enclosure Rating	IP55
Enclosure Material	SGCC(Galvanized Steel)
Cooling	Natural Convection

Forest-RB



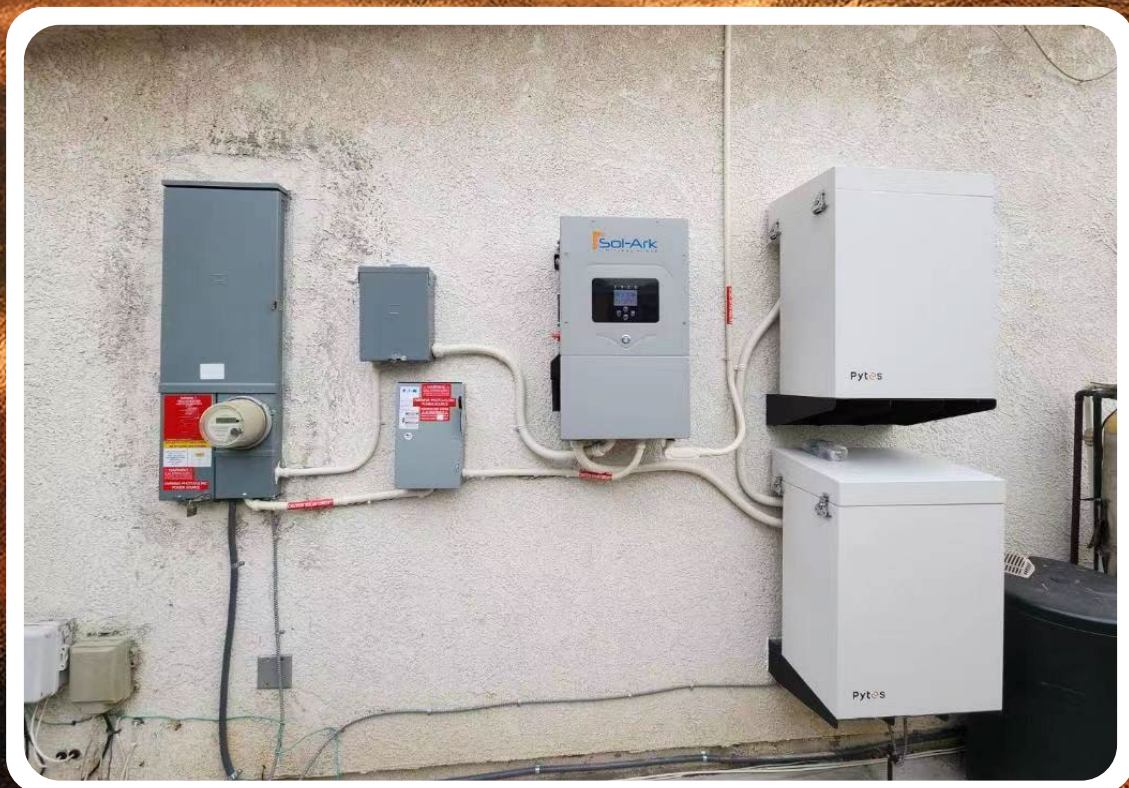
Forest-RB Specs

Mechanical

Load Capacity	6*E-Box 48100R
Structure	Busbar Integrated
Dimensions (L*W*H)	28.3*15.7*45.3 inch
Weight	44.1lbs
Mount	Floor Mount
Enclosure Rating	IP20
Enclosure Material	SGCC(Galvanized Steel)
Cooling	Natural Convection



R-BOX



R-BOX-IP64



Forest-RB



V5°



Features



Remote Monitoring and Upgrading



Higher Charge/Discharge Rate



Wider Operation Temperature



Higher Energy Density



Greater scalability

10 Years Warranty



UN38.3

V5° Specs

Electrical

Nominal Voltage	51.2V
Voltage Range	47.5V~57.6V
Nominal Capacity	100Ah
Nominal Energy	5.12kWh
Recommended Charge/ Discharge Current ^[1]	75A
Max Continuous Charge/ Discharge Current ^[2]	100A
Peak Charge/Discharge Current	101A~120A(3min) ; 121A~180A(15sec)

[1], [2]: The recommended and Max continuous charge and discharge current is for a battery cell temperature within 50°F~104°F to consider.
It will result in a derating on current if out of the temperature range.

General

Chemistry	LFP
Communication Protocol	CAN/RS485
Dimensions (L*W*H)	17.32*20.87*5.51 inch (3.2U)
Weight	97lbs
Ambient Temperature	14°F~131° F
Round-Trip Efficiency	≥95%
Cycle Life ^[3]	≥6000 cycles
Warranty	10 Years

[3]: Test conditions 0.2C Charging/Discharging, @77°F, 80% DOD

Add-on Functionalities

WIFI Connection	Remote monitoring and upgrade
Heating Pad	Temperature Rise: 18°F/h
Scalability	14 pcs (71.68kWh) in a group 6 groups (430.08kWh) in a system w/a Hub

Certifications (On-going)

UL9540 Ed.2 (2020), UL9540A, UL1973, CEC, SGIP

V-BOX-OC



V-Box-OC Specs

Mechanical

Load Capacity	4*V5°
Structure	Busbar & DC Circuit Breaker Integrated
Dimensions (L*W*H)	25.4*15.6*54.9 inch
Weight	194lbs
Mount	Floor Mount
Enclosure Rating	IP55
Enclosure Material	SGCC(Galvanized Steel)
Cooling	Natural Convection

SMART MONITOR

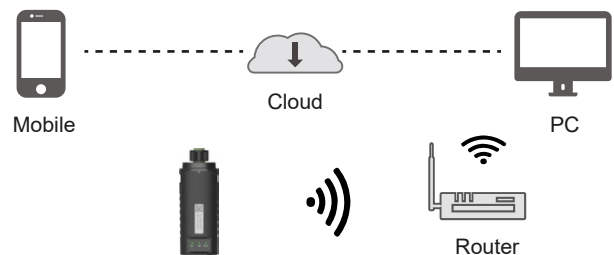


Smart Monitor feature

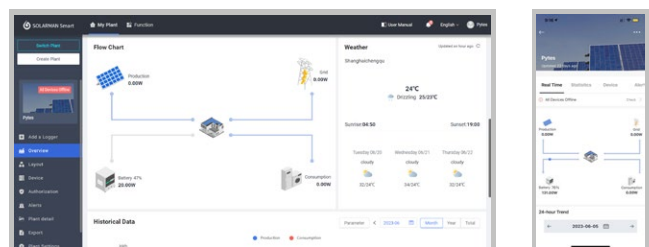
- Real-time Monitoring
- Data Visualization
- Remote Upgrading
- Error Detection
- Alarm Notification



Diagram



WEB/APP



Stack LV Series



Features



Safe

- DC Breaker & Fuse Integrated



Smart

- Remote Upgrading & Monitoring



Powerful

- Scalable to 30.72 kWh (2 to 6 modules) per Stack
- Up to 15.36kW Output Power (Surge: 15.36kW)



Reliable

- Heating Pad Integrated for Wider Operation Temperature



Compact

- Modular Design, Easy Installation, Save Labor Costs



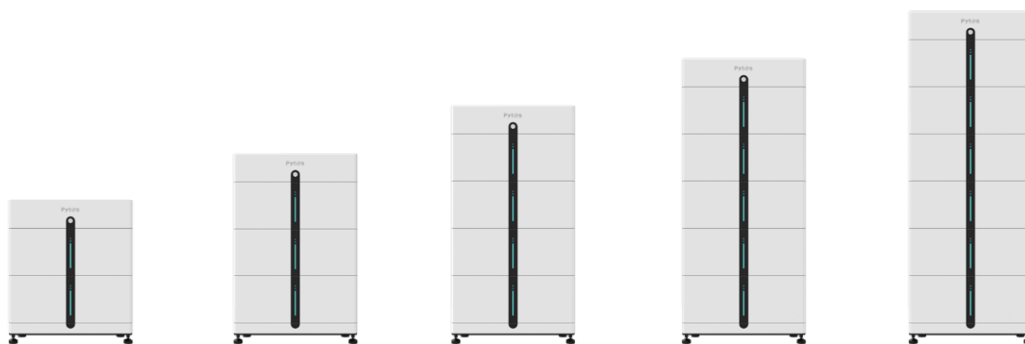
Elegant

- Modernized Design, IP55 Rated Suitable for Indoor & Outdoor installation

Stack LV Series

Battery Management Unit:

Cell Type	LFP
Nominal Energy	5.12kWh
Nominal Voltage	51.2V
Voltage Range	44.8V~57.6V
Nominal Capacity	100Ah
Recommended Discharging/Charging Current	50A
Maximum Discharge/Charge Current	75A
Peak Charge/Discharge Current	100A
Certifications	UL1973, UN38.3, (TBD: UL9540, UL9540A)



Model	2	3	4	5	6
Cell Type	LFP				
Nominal Voltage	51.2V				
Voltage Range	44.8V~57.6V				
Nominal Capacity	100Ah				
Nominal Energy	10.24kWh	15.36 kWh	20.48 kWh	25.6 kWh	30.72 kWh
Recommended Power	5.12kW	7.68KW	10.24KW	12.8KW	15.36KW
Maximum Power	7.68kW	11.52kW	15.36kW	15.36kW	15.36kW
Peak Power	10.24kW	15.36kW	15.36kW	15.36kW	15.36kW
Dimensions (L*W*H)	26.8*9.5*31.5 inch	26.8*9.5*41.7 inch	26.8*9.5*52.0 inch	26.8*9.5*62.2 inch	26.8*9.5*72.4 inch
Weight(lbs)	285.5	411.2	536.8	662.5	788.2
Communication	CAN, RS485				
Cycle Life	≥6000 cycles				
Protection Level	IP55				
Ambient Temperature	14°F~131°F				
Storage Temperature	Within 1 month: -4°F~131°F 1~3 months: 32°F~95°F 4~12 months: 68°F~77°F				

HV48100



Features



Higher Energy Density



Lower Resistive Losses



Superior Performance



Remote Upgrading & Monitoring



Enhanced Safety Features

HV48100 Specs

Battery Controller Unit: HV48100 BCUs

Controller Working Voltage	200V~432V
Self-consumption Power	7.56W
Dimensions (W*D*H)	17.3*20.9*5.5 inch
Weight	28.7 lbs
Communication	CAN, RS485, Dry Contact, WiFi

Battery Management Unit: HV48100 BMUs

Cell Type	LFP
Nominal Energy	5.12kWh
Nominal Voltage	51.2V
Nominal Capacity	100Ah
Continuous Discharging/Charging Current	50Adc
Voltage Range	47.5~57.6V
Dimensions (W*D*H)	17.3*20.9*5.5 inch
Weight	94.8lbs
Communication	CAN, RS485
Cycle Life	≥6000 cycles
Operation Temperature	32°F~122°F
Storage Temperature	-4°F~140°F

HV48100 System

System Energy	5.12kWh*n
System Voltage	51.2V*n
System Capacity	100Ah
Battery System Charge Upper-Voltage	58.4V*n
Battery System Discharge Lower-Voltage	44.8V*n
Continuous Discharging/ Charging Current	50Adc
BCU Model	HV48100 BCUs
BMU Model	HV48100 BMUs
BMU Qty. (Optional)	5~8
Depth of Discharge	90%
Dimensions (W*D*H)	23.6*25.2*63.0 inch
Weight	396.8lbs+94.8lbs*n
Communication	CAN, RS485, Dry Contact, WiFi
Cycle Life	≥6000 cycles
Operation Temperature	32°F~122°F
Storage Temperature	-4°F~140°F
Operation Humidity	0~95%, No Condensation
Protection Level	IP20
Certifications	UL1973, UN38.3, (TBD: UL9540, UL9540A)

Accessories

Brackets



Brackets for E-Box-48100R

150219100018 & 150219100019

F. & B. Bracket



110409100019

R-Bracket (Single Rack)

Single Bracket for 1 pc E-Box 48100R

Easy to expand up to 8 layers

110409100020

R-Bracket (8-in-1)

8 layers for holding 8 pcs E-Box 48100R



Brackets for V5^o

150208100001

V-Bracket

Equipments



HUB

110409100001

Hub

Enables communication with multiple groups of batteries



Busbar:

161506100003

300A Junction Box

300A/6*M5+2*M10 Terminals

110409100026

300A Busbar

300A/12*M6+2*M8 Terminals

110409100027

600A Busbar

600A/6*M10+2*M8 Terminals

Cables



Power Cables

161412100244 & 161412100245

4AWG/2000mm/Amphenol to M8 Bolt

161412100251 & 161412100252

4AWG/160mm/both Amphenol ends

161412100467 & 161412100468

4AWG/2000mm/Amphenol to M10 Bolt

161412100461 & 161412100462

4/0AWG/2000mm/both M10 ends

161412100465 & 161412100466

2/0AWG/2000mm/both M10 ends

Communication Cables

161412101071

Standard Communication Cable

Compatible with: Sol Ark, Megarevo, Luxpower, Growatt, APsystems, SMA, Studer

1614121010XX

Customized Communication Cable

Customized for: Victron, Voltronic, Phocos, MPP, SRNE

161412100916

Console Cable

USB to RJ45 cable for monitoring & upgrading






Curacao




Puerto Rico




Dominican Republic




Indiana




Puerto Rico



Netherlands



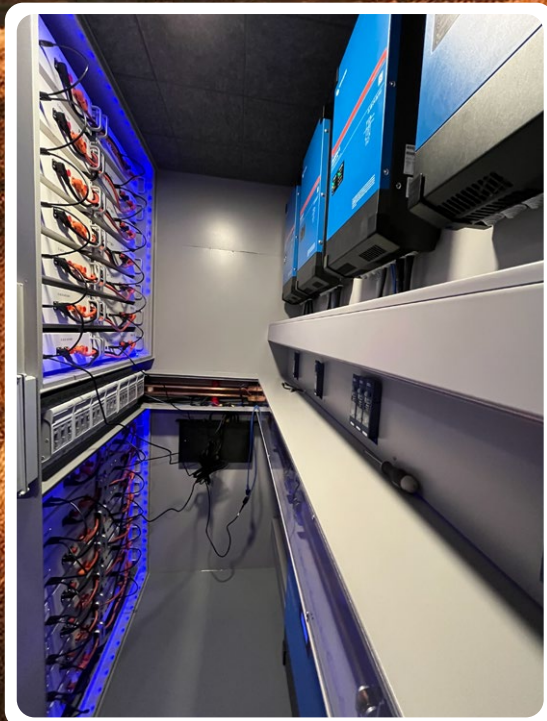
Germany



Germany



Netherlands



Austria

Compatibility List of PYTES ESS and Inverters





PYTES (USA) Energy Inc.

Web: www.pytesusa.com

Shanghai PYTES Energy Co., Ltd.

NO.3492, Jinqian Road, Fengxian District, Shanghai, China

+86-21-57475800



Scan to follow us



More Catalogs



LinkedIn



Facebook



YouTube



www.pytesusa.com

Pytes